

FOR SALE

9055 176 STREET, SURREY BC V4N 6H9
19.85 ACRES BLUEBERRY FARM





PID# 013-238-671
MLS# R2239063
CLS# C8017250

GROSS PROPERTY TAXES:
 \$506.74 (2017)

PRICE:
 \$3,099,000

ZONING:

A-1 - Within The Agricultural Land Reserve (ALR)

DUE DILIGENCE DOCUMENTS:

1. Title Search
2. Property Disclosure Statement (Upon Accepted Offer)
3. Zoning Documents

PROPERTY DIMENSIONS:

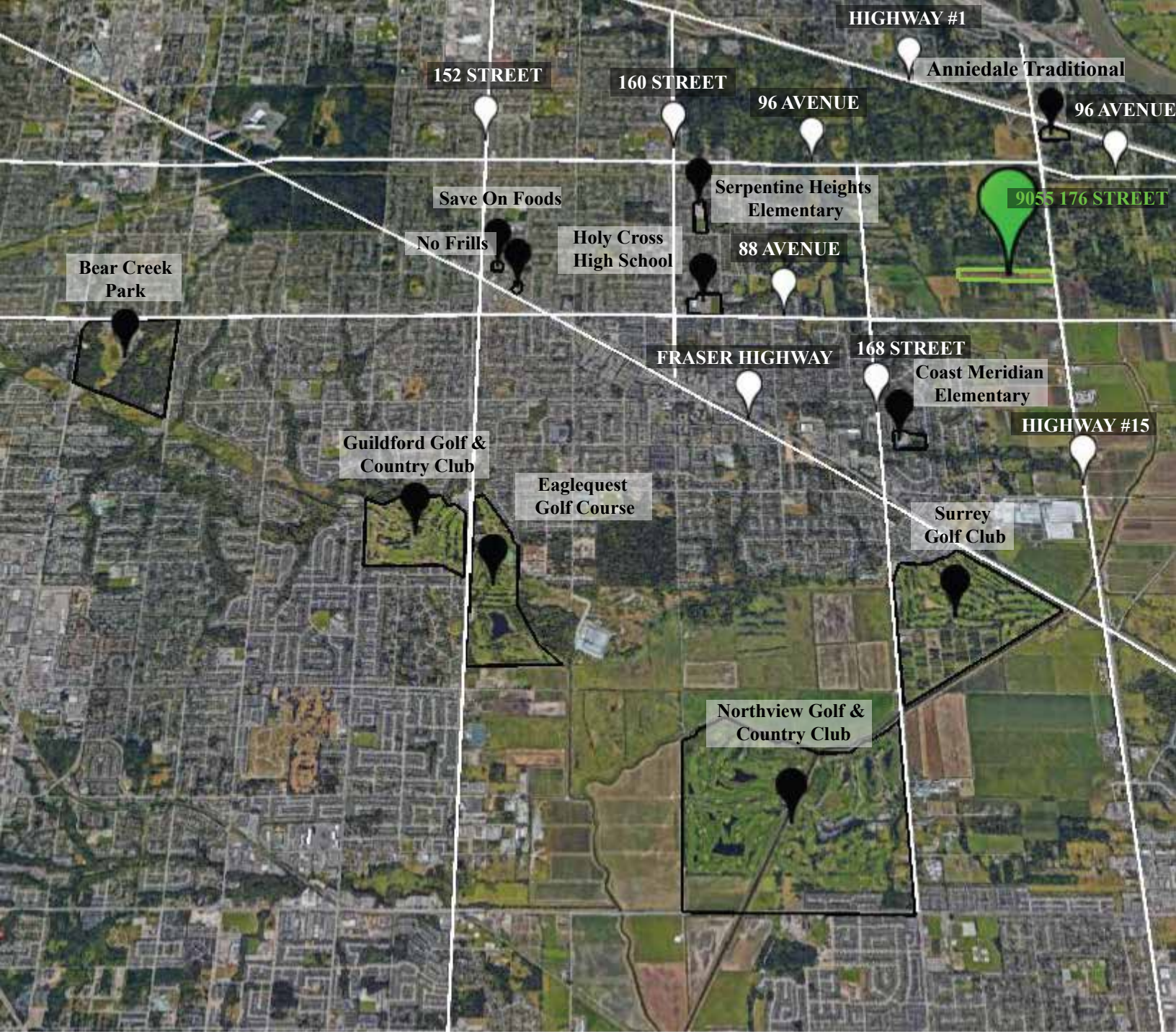
Frontage: 336.40 Feet
Depth: 2,571 Feet

LOCATION DESCRIPTION:

Rare Opportunity to own a 19.85 acre Blueberry farm in Tynehead . The property has an approved variance to build your dream estate house approx 500 feet away from the front property line. The subject property is currently planted in approx 16 acres of Liberty variety blueberries in rich fertile peat soil. The field was professionally laser leveled and includes a full drainage system with 15 ft spacing, a full drip irrigation system along with all poles and trellising for the ease of machine harvesting. The property is located on a truck route and is on the west side of 176 Street(Highway #15). Easy access to Highway #1 (Trans-Canada Hwy), Fraser Highway and Golden Ears Way/Bridge.

PROPERTY VIEWS:





9055 176 STREET, SURREY BC V4N 6H9
19.85 ACRES BLUEBERRY FARM

PRICE: \$3,099,000

NAV & TAJ SEKHON & SEKHON

Personal Real Estate Corporation

FARMS IN BC
www.farmsinbc.com

NAV SEKHON
 604-782-0988
nav@farmsinbc.com

TAJ SEKHON
 604-725-8403
taj@farmsinbc.com

OFFICE
 604-593-5122
info@farmsinbc.com

