



6230 TOLMIE ROAD, ABBOTSFORD

24.21 ACRES • HOUSE & ACREAGE



FARMS IN BC
REAL ESTATE GROUP

ABOUT THE PROPERTY

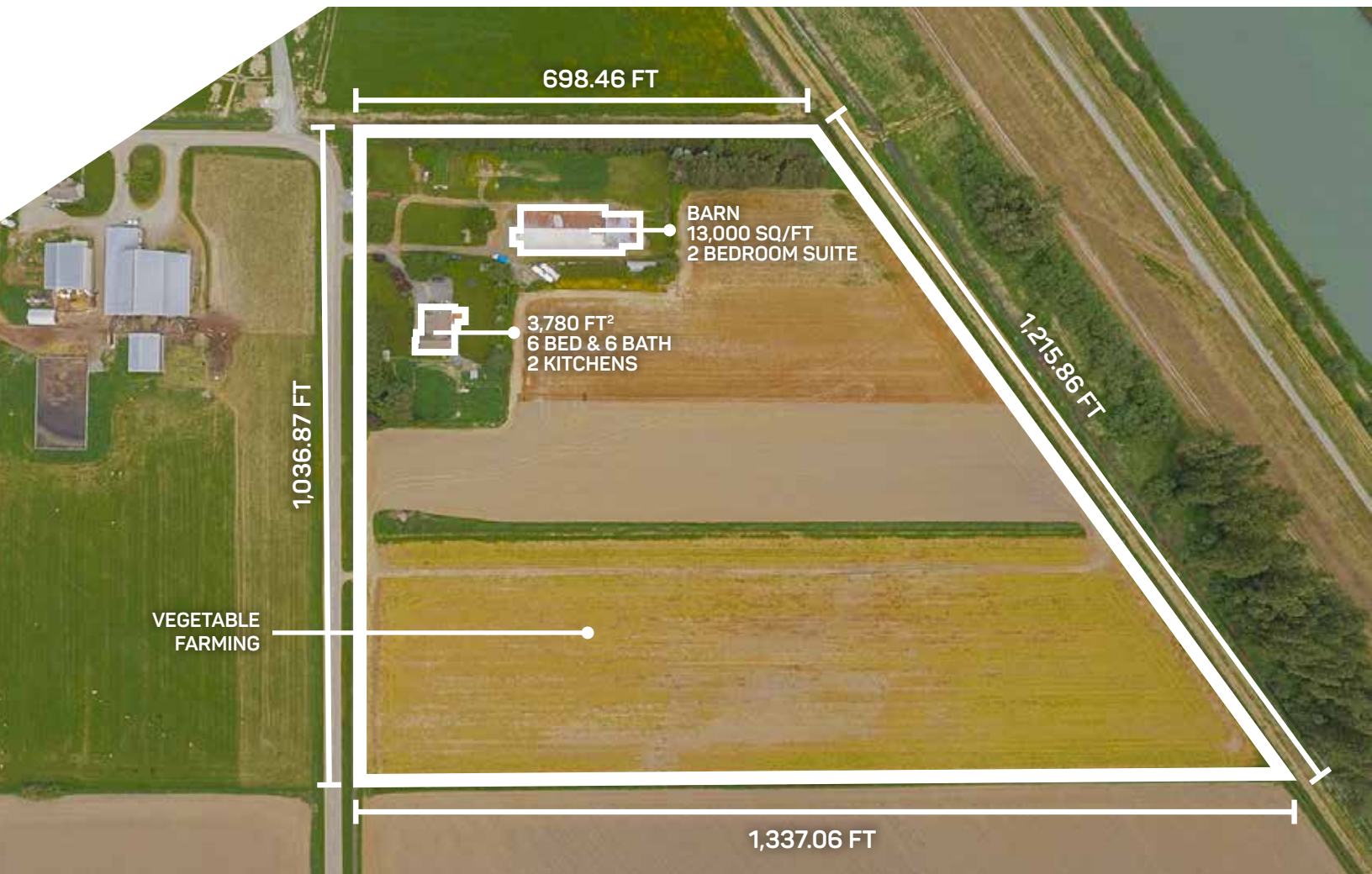
Previous Price: ~~\$2,875,000~~

PRICE \$2,775,000

Frontage: 1,036.87 ft

Depth: 1,337.06 ft

24.21 Acres in Abbotsford. House (3,780 sq.ft.) with 6 bedrooms and 6 bathrooms, ideal for 2 families. The subject property has a large barn (13,000 sq.ft.) with a 2 bedroom, 1 bathroom suite above. The barn has water, hydro, and 400 amp services with concrete floors. The farm has fertile soil great to grow various crops like blueberries and vegetables. There is a large frontage of 1,036ft. This property is in a central location close to all amenities, Cultus Lake and easy access to Highway #1.



- PID 014-211-891
- MLS R2372564
- CLS C8025726
- GROSS TAX \$4,295.83 - 2018
- ZONING A2 - (Agricultural Land Reserve)

DUE DILIGENCE DOCUMENTS

- Title Search
- Property Disclosure Statement (Upon Accepted Offer)
- Zoning Document





NAV SEKHON

Personal Real Estate Corporation

604.782.0988

info@farmsinbc.com



www.farmsinbc.com

Farms in BC. All rights reserved. Content may not be reproduced, copied, altered, distributed, stored or transferred in any form or by any means without express written permission. Locations, dimensions, specifications, prices and features are approximate and subject to change without notice. Not intended to solicit properties currently listed for sale or individuals currently under contract with a Brokerage.