



31433 KING ROAD, ABBOTSFORD

4 ACRES • HOUSE & ACREAGE | GREENHOUSE FACILITY



FARMS IN BC
REAL ESTATE GROUP

ABOUT THE PROPERTY

4 ACRE - GREENHOUSE FACILITY. Well maintained 2.5 Acre glass greenhouse facility with a 6,800 sq.ft. Warehouse with a dry loading dock, Office, Employee lunch room, and bathrooms. Fully equipped with the latest Priva software climate control, new U.V. filtration system for fertigation system. 2,400 SQ/FT Home with 3 Bedrooms and 3 Bathrooms used for farmer employee housing. Great future potential in a very desirable location, located within the "Special Study Area" "B" of the OCP. Close to all amenities and easy access to Sumas Way (Highway #11) and Sumas USA Boarder, Fraser Highway and Highway #1.

PRICE \$5,750,000

Frontage: 260 ft

Depth: 651 ft



- PID 011-201-461
- MLS R2436689
- CLS C8030792
- GROSS TAX \$1,182.98 - 2019
- ZONING A-1

DUE DILIGENCE DOCUMENTS

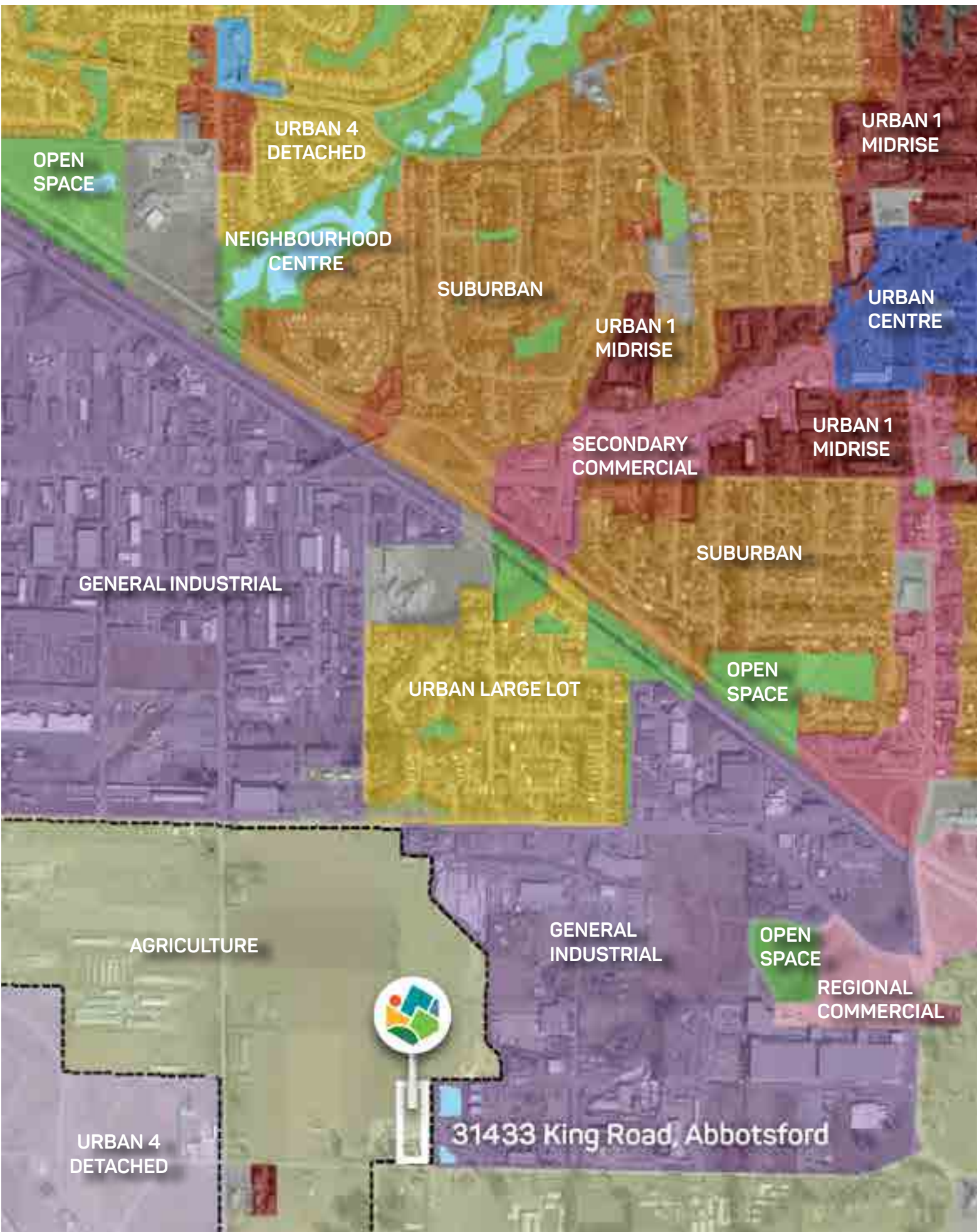
- Title Search
- Property Disclosure Statement (Upon Accepted Offer)
- Zoning Document

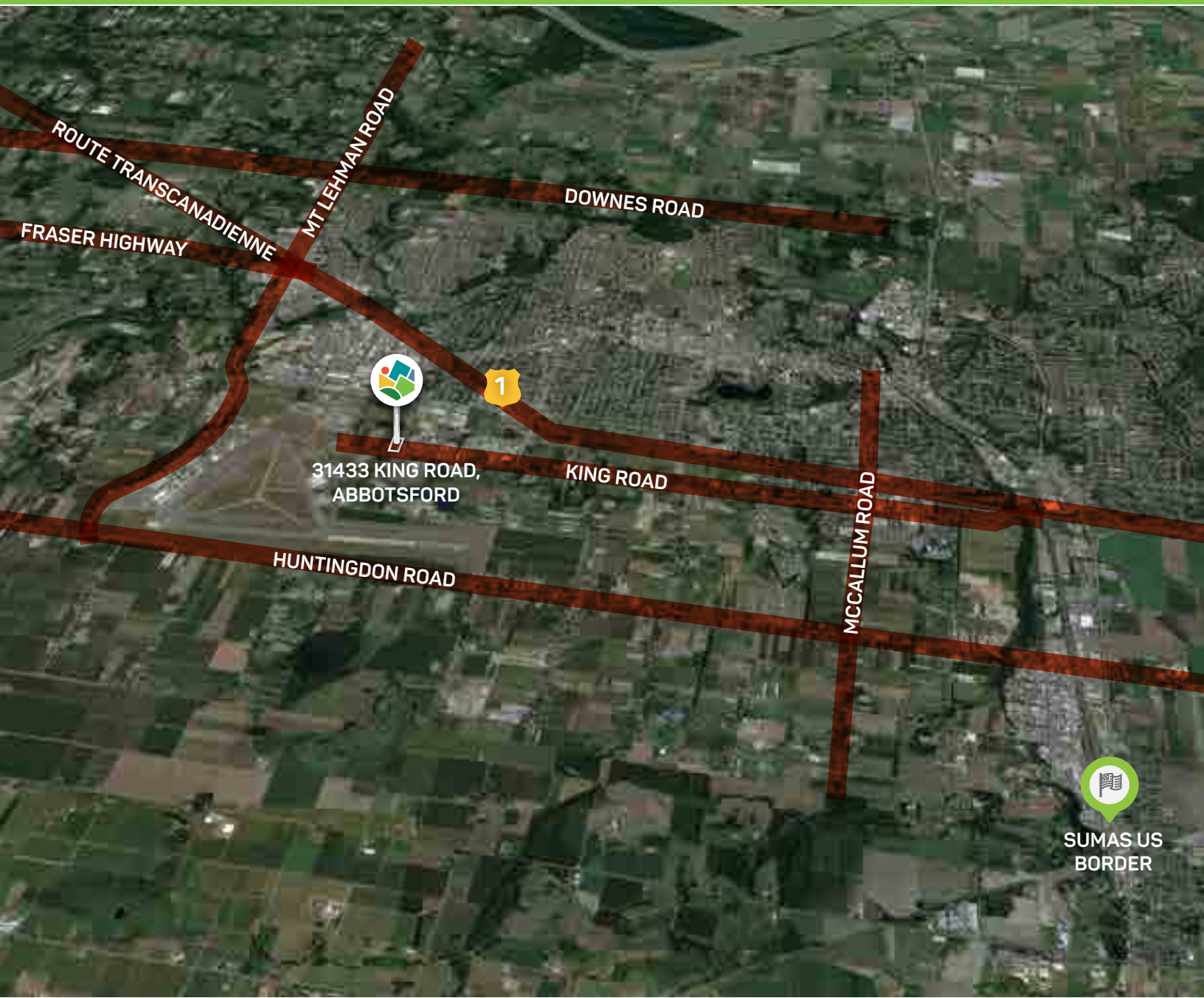












NAV SEKHON

Personal Real Estate Corporation

604.782.0988

info@farmsinbc.com



www.farmsinbc.com

Farms in BC. All rights reserved. Content may not be reproduced, copied, altered, distributed, stored or transferred in any form or by any means without express written permission. Locations, dimensions, specifications, prices and features are approximate and subject to change without notice. Not intended to solicit properties currently listed for sale or individuals currently under contract with a Brokerage.