



**46109 BRINX ROAD, CHILLIWACK**

6.16 ACRES • HOUSE & BUILDINGS



**FARMS IN BC**  
REAL ESTATE GROUP

# ABOUT THE PROPERTY

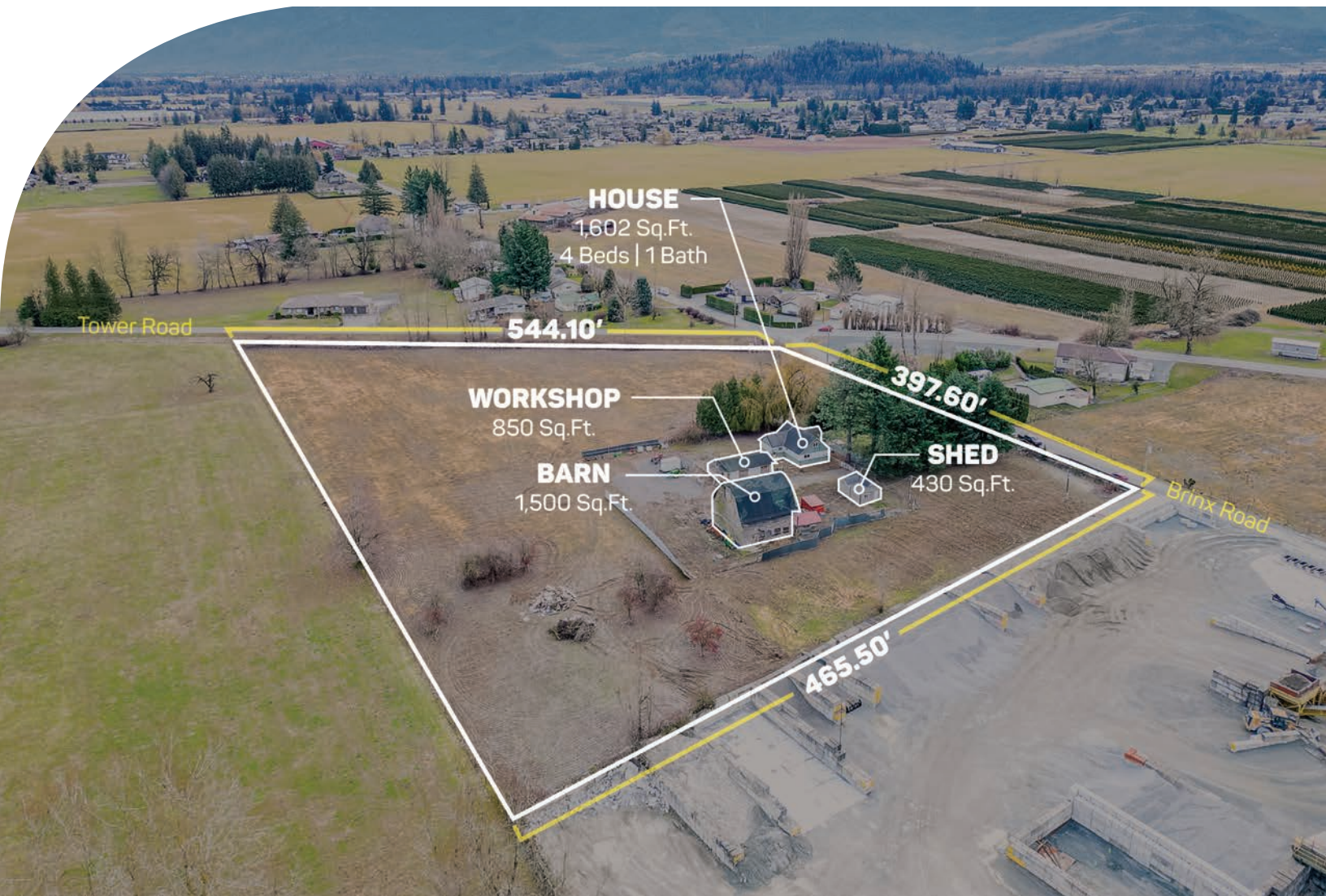
**6.16 ACRES HOUSE AND BUILDINGS.** A great holding investment adjacent property is Heavey Industrial, the property has two road frontages Tower Road and Brinx Road. Currently, the Main House is 1,602 SQ/FT and offers 4 bedrooms and 1 bathroom. Multiple outbuildings, 1,500 SQ/FT Barn with 6 horse stalls, 850 SQ/FT Workshop, and 430 SQ/FT Shed. Fertile soil is great for various crops and currently growing vegetables. Easy access to Highway #1 and close to all amenities.

**PRICE \$1,650,000**

**Frontage #1:** 397.60 ft (Brinx Road)

**Frontage #2:** 544.10 ft (Tower Road)

**Depth:** 465.50 ft

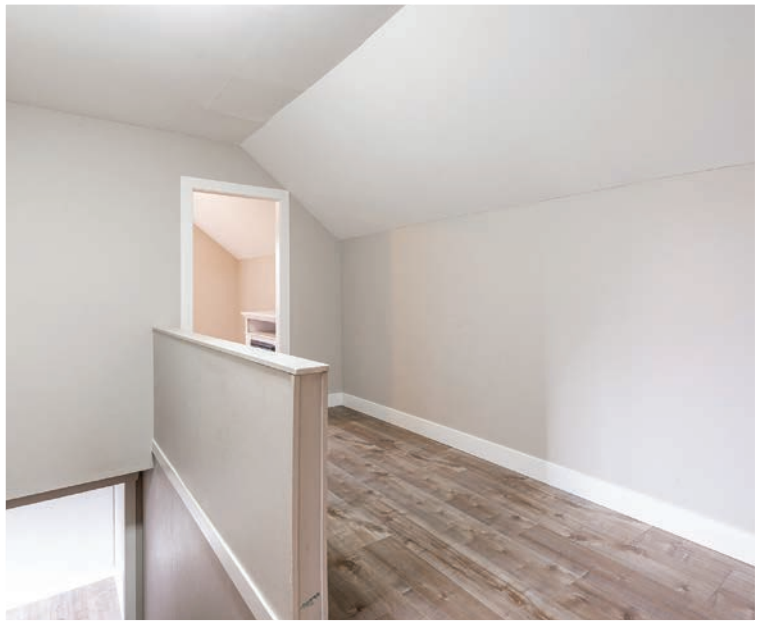


- PID 013-030-086
- MLS R2845297
- GROSS TAX \$1,575.04 - 2023
- ZONING RS-FHA

## DUE DILIGENCE DOCUMENTS

- Title Search
- Property Disclosure Statement (Upon Accepted Offer)
- Zoning Document













**NAV SEKHON**

**604-782-0988**

[nav@farmsinbc.com](mailto:nav@farmsinbc.com)

**exp**  
REALTY

**farmsinbc.com**

Farms in BC. All rights reserved. Content may not be reproduced, copied, altered, distributed, stored or transferred in any form or by any means without express written permission. Locations, dimensions, specifications, prices and features are approximate and subject to change without notice. Not intended to solicit properties currently listed for sale or individuals currently under contract with a Brokerage.