



3885 152 STREET, SURREY

5.21 ACRES • HOUSE, BUILDINGS & BLUEBERRY FARM



FARMS IN BC
REAL ESTATE GROUP

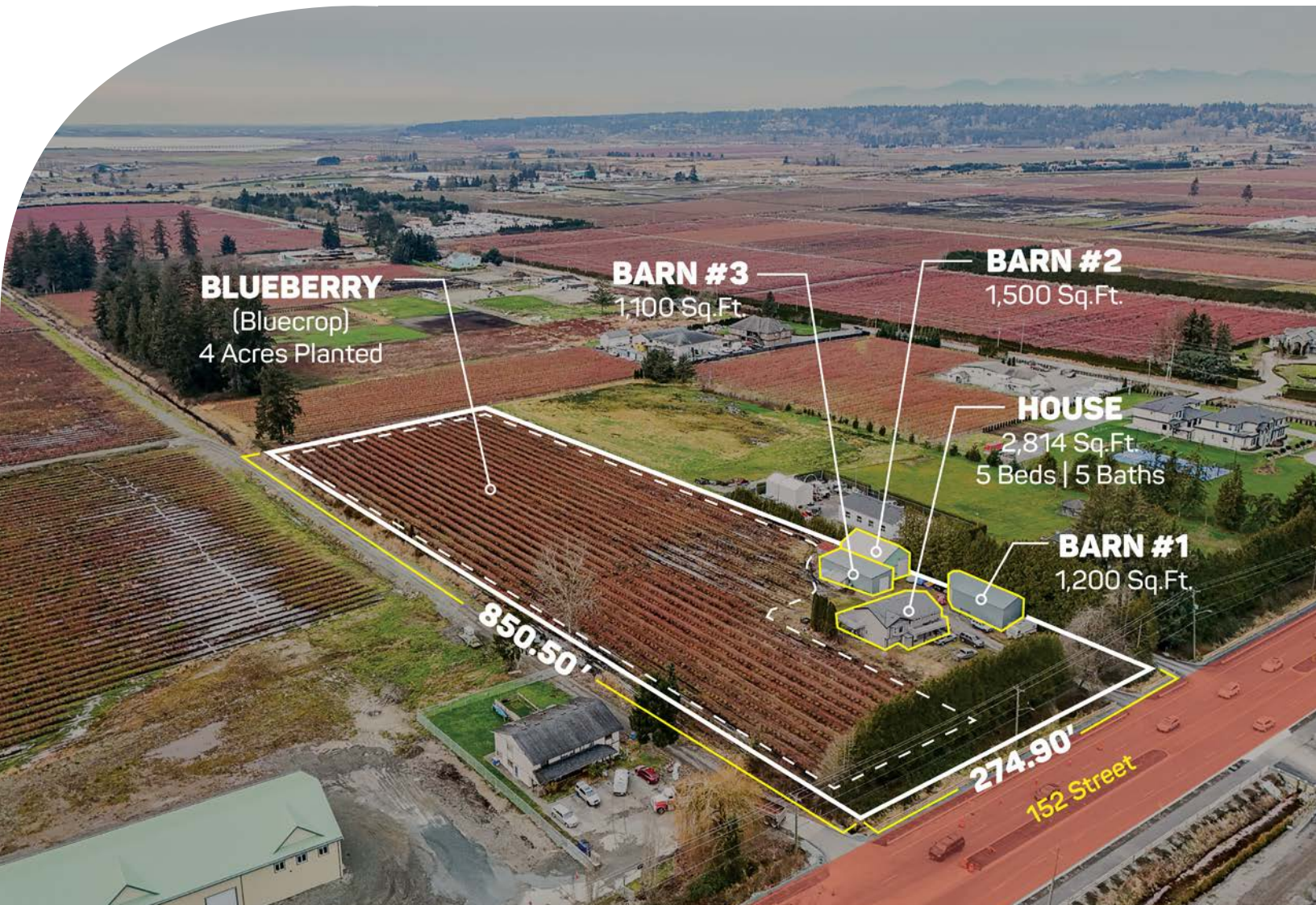
ABOUT THE PROPERTY

5.21 ACRES - HOUSE, BUILDINGS, BLUEBERRY FARM AND CASHFLOW! Currently has a 2,814 SQ/FT Split Level Home with 3 living areas, and has 5 Bedrooms and 5 Bathrooms. Has 3 Barns 1,500 SQ/FT, 1,200 SQ/FT, and 1,100 SQ/FT. Fully planted in Blueberry with Bluecrop Variety. It is a fantastic location to build your dream home with access to all utilities, including City Water. Close to all amenities: Morgan Creek Golf Course, schools, transit, and shopping. Easy access to Highway #10, Highway #1,5 and the US Border.

PRICE \$3,495,000

Frontage: 274.90 ft (152 Street)

Depth: 850.50 ft



- PID 001-826-620
- MLS R2960299
- GROSS TAX \$802.57 - 2024
- ZONING A-1

DUE DILIGENCE DOCUMENTS

- Title Search
- Property Disclosure Statement (Upon Accepted Offer)
- Zoning Document





NAV SEKHON

604-782-0988

nav@farmsinbc.com

exp
REALTY

farmsinbc.com

Farms in BC. All rights reserved. Content may not be reproduced, copied, altered, distributed, stored or transferred in any form or by any means without express written permission. Locations, dimensions, specifications, prices and features are approximate and subject to change without notice. Not intended to solicit properties currently listed for sale or individuals currently under contract with a Brokerage.