



2508 232 STREET, LANGLEY

14.98 ACRES • TWO HOUSES & ACREAGE | BLUEBERRY



FARMS IN BC
REAL ESTATE GROUP

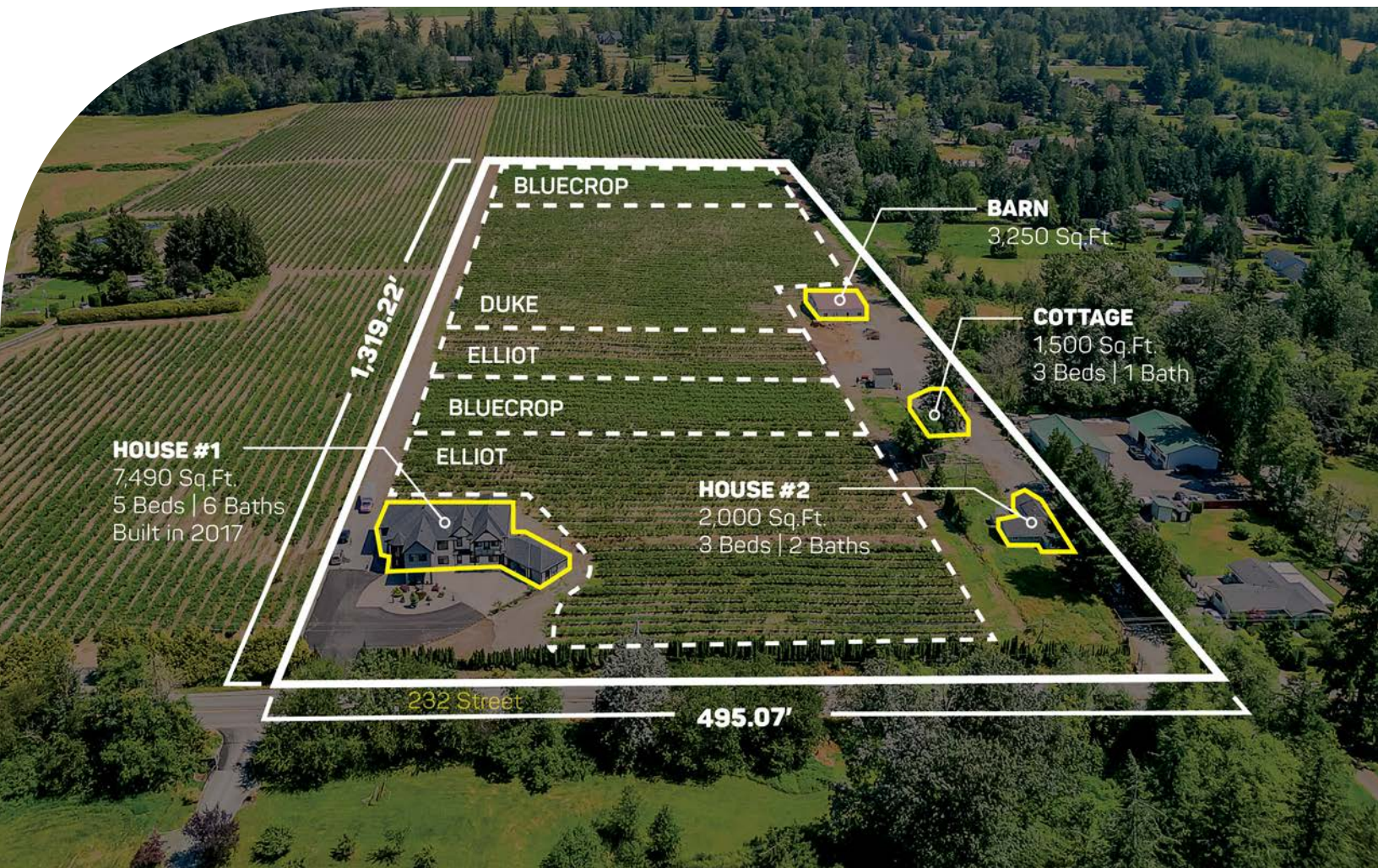
ABOUT THE PROPERTY

PRICE \$5,500,000

Frontage: 495.07 ft (232 Street)

Depth: 1,319.22 ft

14.98 ACRES, 2 HOMES AND BLUEBERRY FARM. The main Estate home was built in 2017 and is 7,490 SQ/FT, which includes 5 spacious Bedrooms each with a walk-in closets, 6 Bathrooms, a Games Room, Theater Room and Bar Room. A Fully renovated second house is 2,000 SQ/FT with 3 Bedrooms and 2 Bathrooms. Fully renovated 1,500 SQ/FT Cottage/ Workshop with 2 Bedrooms and 1 Bathrooms Also included is a 3,250 SQ/FT Workshop/ Barn. Approx. 12 Acres are planted in Duke, Bluecrop and Elliot Blueberry varieties, which were planted in 2006 and are in full production producing approx. 110,0000 - 120,000 LBS annually. Easy access to all amenities and easy access to Fraser Highway, Highway #10, Highway #1, and USA Boarder.



- PID 003-956-296
- MLS R3028429
- GROSS TAX \$16,955.75 - 2024
- ZONING RU-3

DUE DILIGENCE DOCUMENTS

- Title Search
- Property Disclosure Statement (Upon Accepted Offer)
- Zoning Document













NAV SEKHON

604-782-0988

nav@farmsinbc.com

exp
REALTY

farmsinbc.com

Farms in BC. All rights reserved. Content may not be reproduced, copied, altered, distributed, stored or transferred in any form or by any means without express written permission. Locations, dimensions, specifications, prices and features are approximate and subject to change without notice. Not intended to solicit properties currently listed for sale or individuals currently under contract with a Brokerage.