



13511 224 STREET, MAPLE RIDGE

8 ACRES • HOUSE & ACREAGE



FARMS IN BC
REAL ESTATE GROUP

ABOUT THE PROPERTY

8 ACRES - HOUSE AND ACREAGE. Centrally located close to downtown Maple Ridge! Great location to build an Estate Home. The main home is 2,151 SQ/FT WITH 3 Bedrooms and 2 Bathrooms. Fertile soil is great for various crops. The Property has City Water, Gas, and Hydro. Minutes away from all schools, amenities, and entertainment. Easy access to Lougheed Highway and Highway #7.

PRICE \$2,125,000

Frontage: 261.80 ft (224 Street)

Depth: 1,329.40 ft

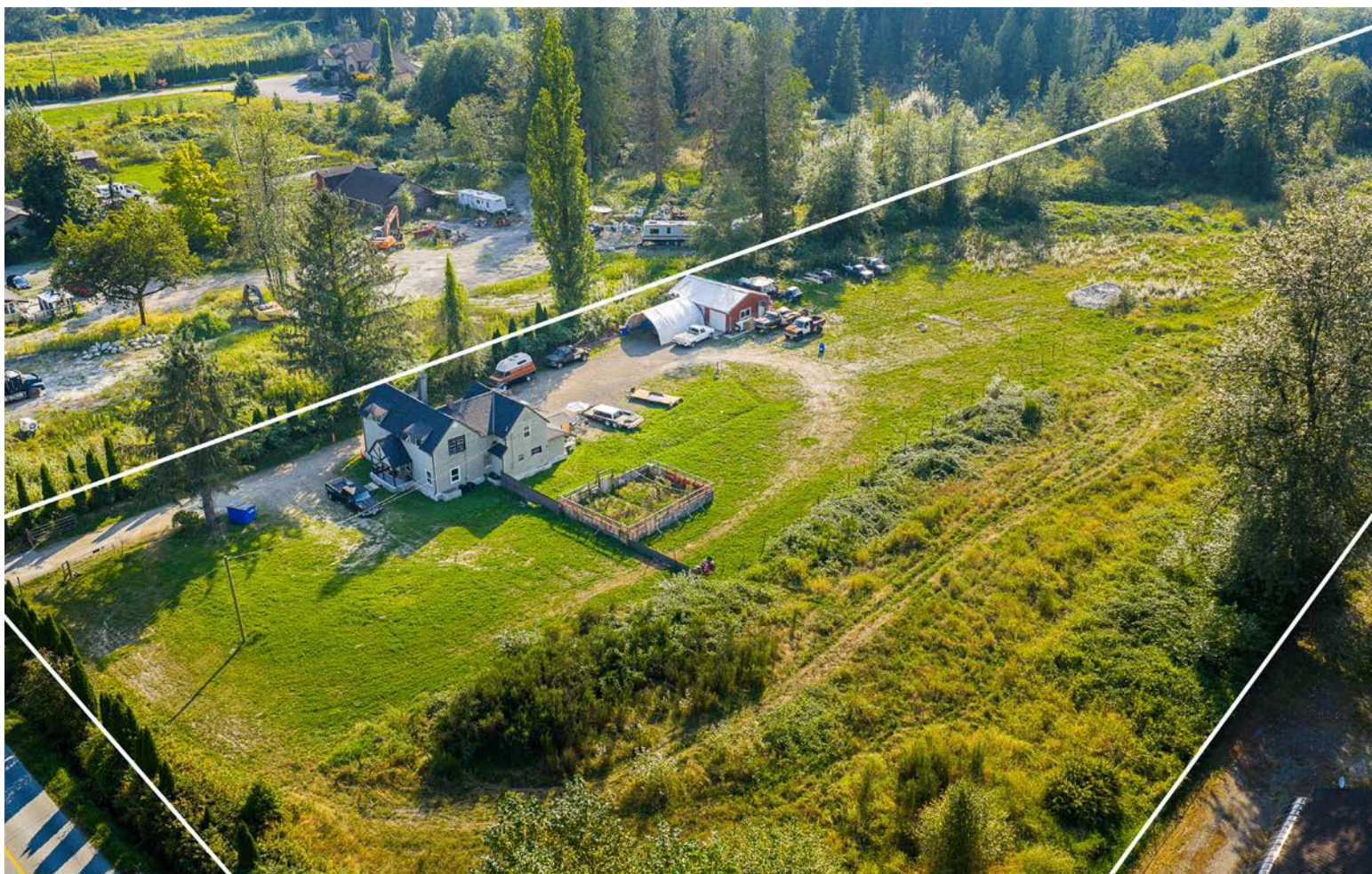


- PID 002-771-225
- MLS R3042402
- GROSS TAX \$5,859.45 - 2024
- ZONING RS-3

DUE DILIGENCE DOCUMENTS

- Title Search
- Property Disclosure Statement (Upon Accepted Offer)
- Zoning Document





NAV SEKHON

604-782-0988

nav@farmsinbc.com

exp
REALTY

farmsinbc.com

Farms in BC. All rights reserved. Content may not be reproduced, copied, altered, distributed, stored or transferred in any form or by any means without express written permission. Locations, dimensions, specifications, prices and features are approximate and subject to change without notice. Not intended to solicit properties currently listed for sale or individuals currently under contract with a Brokerage.