



13795 HALE ROAD, PITT MEADOWS

46.68 ACRES • 2 HOMES AND BLUEBERRY FARM



FARMS IN BC
REAL ESTATE GROUP

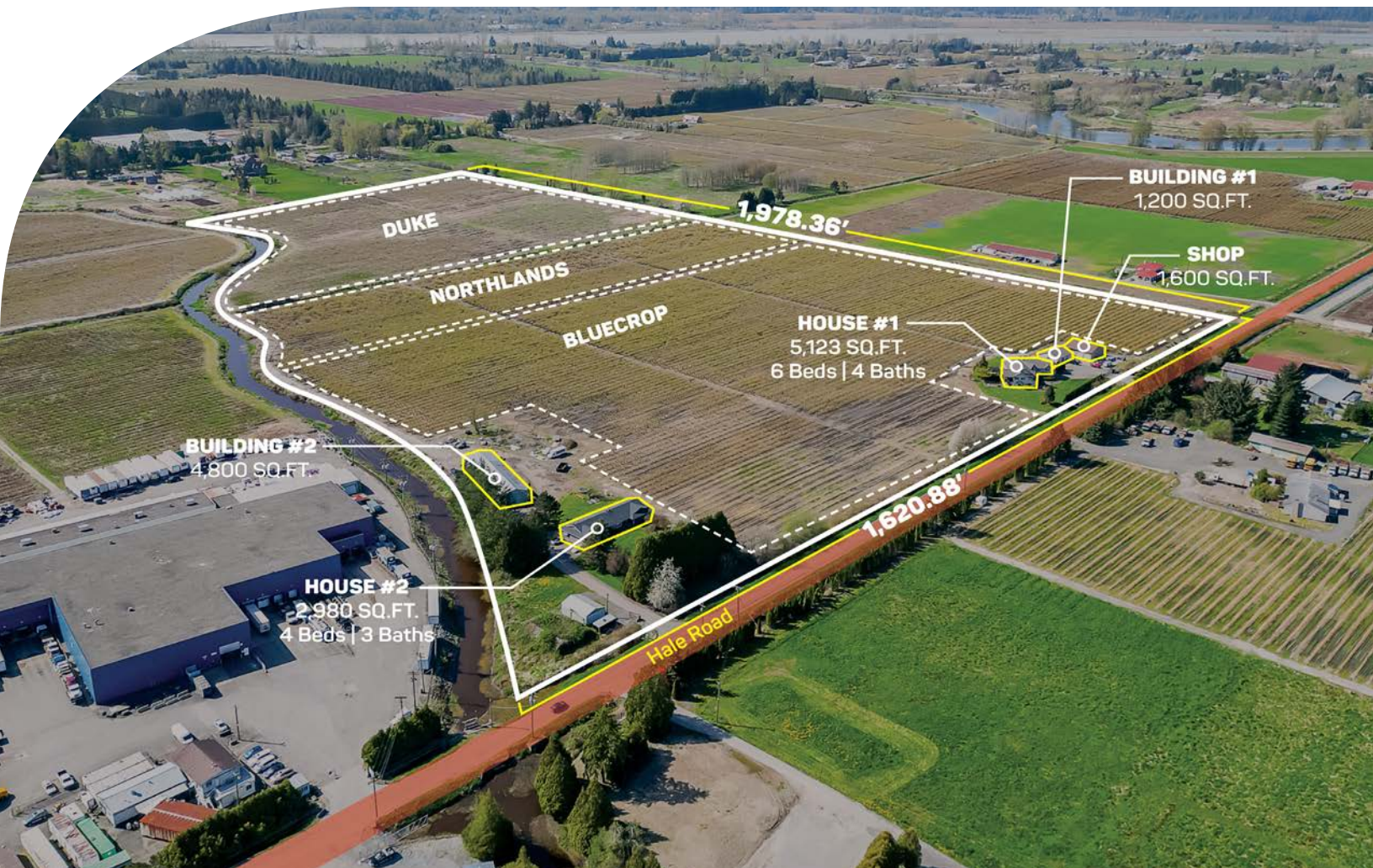
ABOUT THE PROPERTY

PRICE \$5,495,000

Frontage: 1,620.88' ft (St/Av)

Depth: 1,978.36' ft

46.68 ACRES 2 HOUSES AND BLUEBERRY FARM. The main home is 5,123 SQ/FT built in 1997 and includes 6 spacious bedrooms and 4 Bathrooms. Has a 1,200 SQ/FT Storage Building and a 1,600 SQ/FT Shop. The fully renovated second house is 2,980 SQ/FT with 4 bedrooms and 3 bathrooms and has a large 4,800 SQ/FT Building/ Workshop. Total of 40 Acres are planted in 3 varieties of blueberries, Duke, Bluecrop and Northlands producing approx. 350,000 LBS annually. Easy Access to Golden Ears Way, Lougheed Highway and Highway #1. This is a great location, close to all amenities with beautiful surrounding mountain & valley views.



- PID 013-273-892
- MLS R3044299
- GROSS TAX \$11,558.96- 2024
- ZONING A-1

DUE DILIGENCE DOCUMENTS

- Title Search
- Property Disclosure Statement (Upon Accepted Offer)
- Zoning Document













NAV SEKHON

604-782-0988

nav@farmsinbc.com

exp
REALTY

farmsinbc.com

Farms in BC. All rights reserved. Content may not be reproduced, copied, altered, distributed, stored or transferred in any form or by any means without express written permission. Locations, dimensions, specifications, prices and features are approximate and subject to change without notice. Not intended to solicit properties currently listed for sale or individuals currently under contract with a Brokerage.