



2475 MT LEHMAN ROAD, ABBOTSFORD

15.75 ACRES • HOUSE & ACREAGE



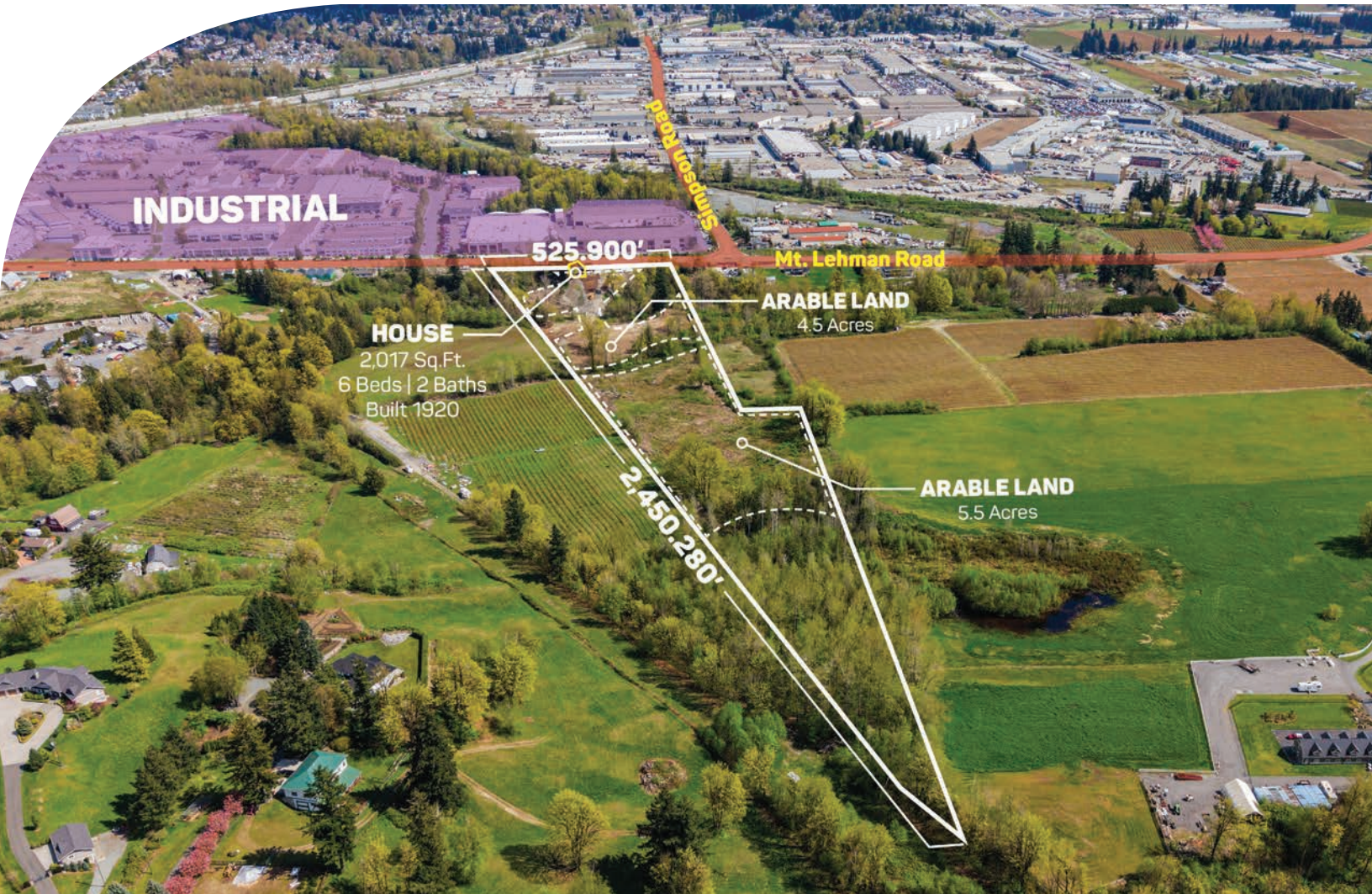
ABOUT THE PROPERTY

15.75 ACRES NEAR INDUSTRIAL ON MT LEHMAN! Features a 2,017 SQFT Home with 6 Beds & 2 Baths, ideal for rental income while planning your Estate Home build with Mt Baker views. New Culvert installed and over 10 Acres Fully Cleared for Planting. A great holding opportunity in the rapidly expanding Mt Lehman corridor, surrounded by ongoing development and offering upside potential from the proposed Simpson Road Extension along the south boundary. Located within the ALR, zoned for Agricultural use, and Not in the Floodplains. This high exposure property is just minutes to Abbotsford Airport, Highstreet Mall & Highway 1. Showings by Appointment Only.

PRICE \$2,799,000

Frontage: 525.900 ft (Mount Lehman Rd)

Depth: 2,450.280 ft



- PID 013-341-995
- MLS R3115563
- GROSS TAX \$9,183.02 - 2025
- ZONING A-1

DUE DILIGENCE DOCUMENTS

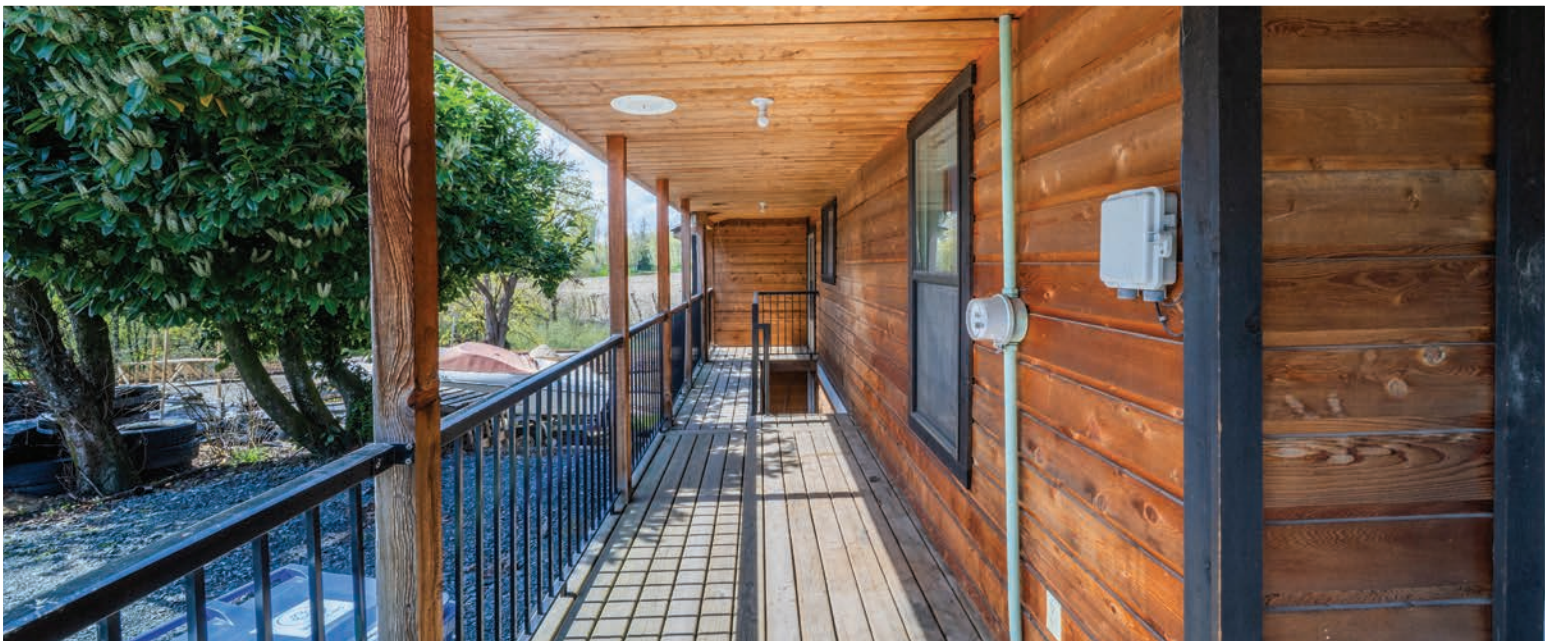
- Title Search
- Property Disclosure Statement (Upon Accepted Offer)
- Zoning Document

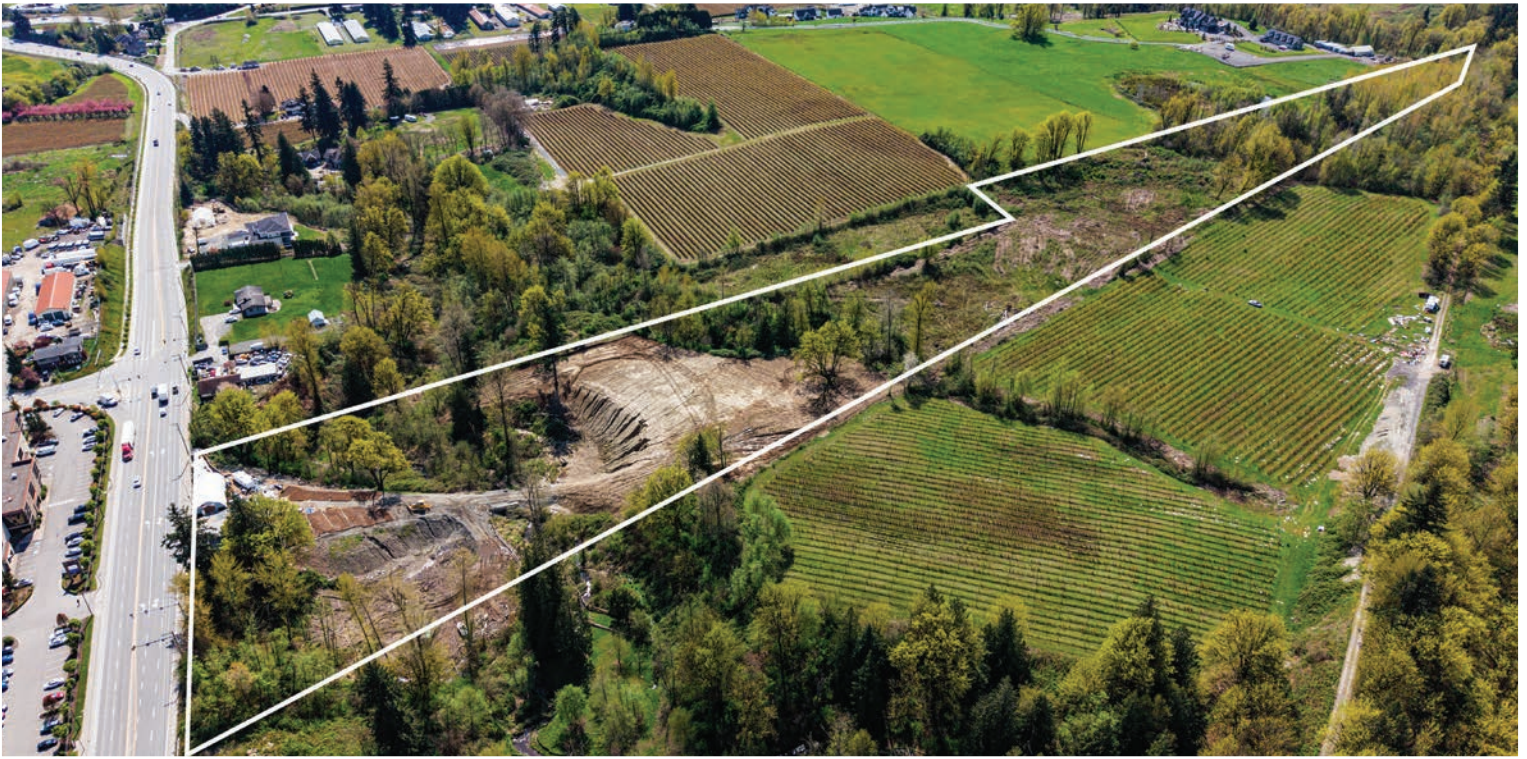












JAY KHAKH

604-418-2937

jay@farmsinbc.com

www.farmsinbc.com



SAT SWAICH

604-832-3225

sat@primepropertygroup.ca

www.primerepropertygroup.ca



All rights reserved. Content may not be reproduced, copied, altered, distributed, stored or transferred in any form or by any means without express written permission. Locations, dimensions, specifications, prices and features are approximate and subject to change without notice. Not intended to solicit properties currently listed for sale or individuals currently under contract with a Brokerage.