



3792 176 STREET, SURREY

19.17 ACRES • HOUSE AND BUILDING PRELOADS



FARMS IN BC
REAL ESTATE GROUP

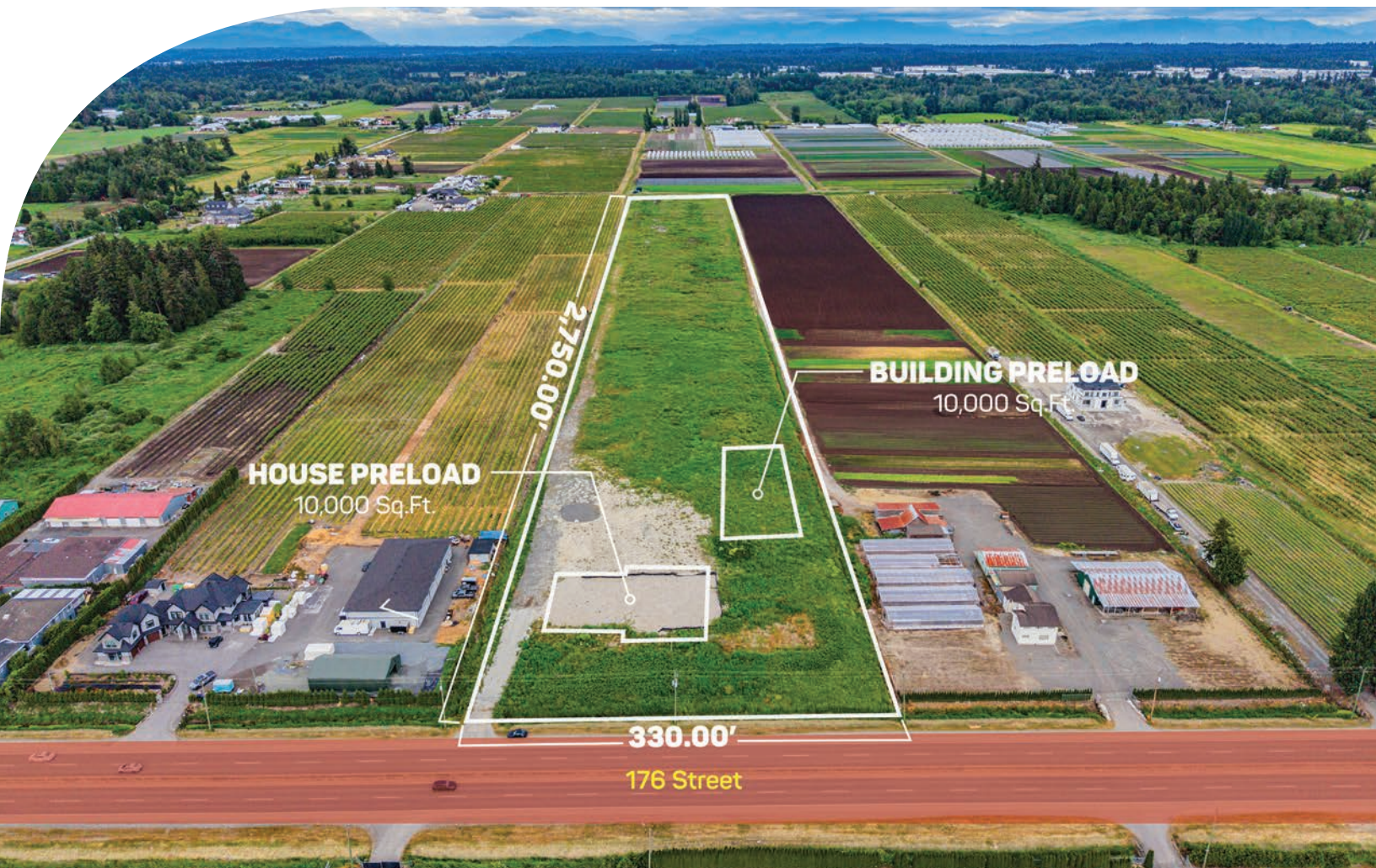
ABOUT THE PROPERTY

PRICE \$3,495,000

Frontage: 330.00 ft (176 Street)

Depth: 2,750 ft

19.71 ACRES - HOUSE AND BUILDING PRELOADS! Excellent opportunity to build your dream estate home and start your agri-business. The property includes 2 preloaded building pads: a 10,000 SQ/FT preload pad ready for a future 5,400 SQ/FT home with mountain views, plus a second 10,000 SQ/FT preload pad for a future barn/building. Utilities are available at the lot line, including hydro, natural gas, and city water. High-exposure location with excellent frontage and visibility along Highway #17, offering strong traffic exposure for agricultural or agri-business use. Fertile soil suitable for a variety of crops, fruit, and vegetables. Conveniently located to schools, transit, Morgan Creek Golf Course, the new Surrey hospital, shopping, and amenities. Easy access to Highway #10 and Highway #17.



- PID 007-612-923
- MLS R3131963
- GROSS TAX \$11,258.31 - 2025
- ZONING A-1

DUE DILIGENCE DOCUMENTS

- Title Search
- Property Disclosure Statement (Upon Accepted Offer)
- Zoning Document





NAV SEKHON

604-782-0988

nav@farmsinbc.com

exp
REALTY

farmsinbc.com

Farms in BC. All rights reserved. Content may not be reproduced, copied, altered, distributed, stored or transferred in any form or by any means without express written permission. Locations, dimensions, specifications, prices and features are approximate and subject to change without notice. Not intended to solicit properties currently listed for sale or individuals currently under contract with a Brokerage.