



4371 184 STREET, SURREY

12.24 ACRES • ESTATE AND BLUEBERRY FARM



FARMS IN BC
REAL ESTATE GROUP

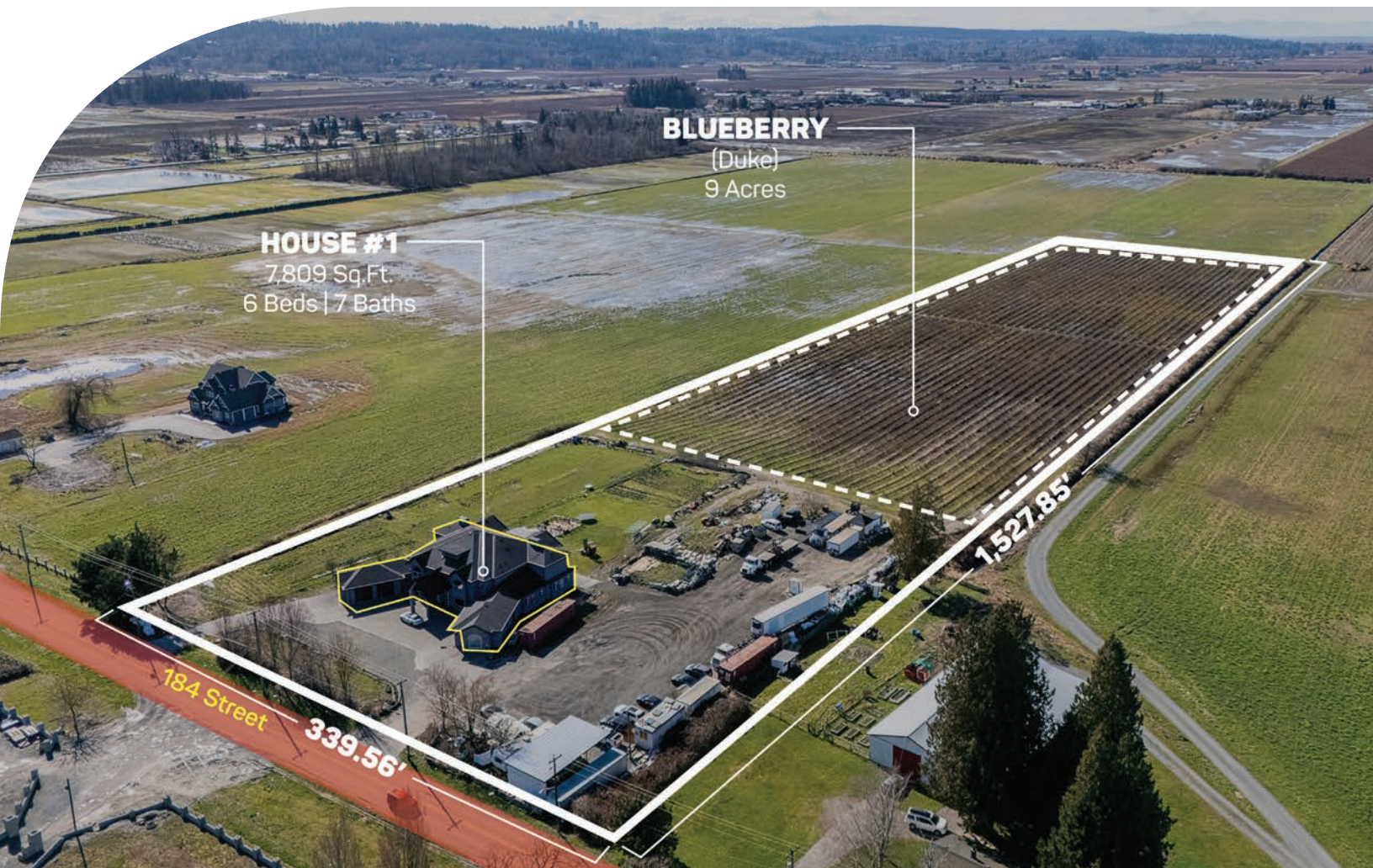
ABOUT THE PROPERTY

12.24 ACRES ESTATE HOME AND BLUEBERRY FARM! This private estate residence offers 7,809 SQ/FT of luxurious living on two expansive levels. This custom residence features dual stairways, soaring ceilings, a large great room, a large media room, elegant principal rooms, a world-class chef's kitchen, a secondary prep kitchen, and MUCH more. There are 6 spacious bedrooms, all with ensuite washrooms. Enjoy endless Valley views overlooking Cloverdale and South Surrey. 9 Acres of Duke Blueberry variety with drainage, poles, wires, and full drip irrigation. Close to all amenities, entertainment, schools, shopping, and minutes away from New Surrey Hospital. Easy access to Highway #10, Highway #17, and the USA Border.

PRICE \$4,975,000

Frontage: 339.56 ft (184 Street)

Depth: 1,527.85 ft



HOUSE #1
7,809 Sq.Ft.
6 Beds | 7 Baths

BLUEBERRY
(Duke)
9 Acres

184 Street
339.56'

1,527.85'

- PID 010-895-094
- MLS R3136759
- GROSS TAX \$12,483.62 - 2025
- ZONING A-1

DUE DILIGENCE DOCUMENTS

- Title Search
- Property Disclosure Statement (Upon Accepted Offer)
- Zoning Document





NAV SEKHON

604-782-0988

nav@farmsinbc.com

exp
REALTY

farmsinbc.com

Farms in BC. All rights reserved. Content may not be reproduced, copied, altered, distributed, stored or transferred in any form or by any means without express written permission. Locations, dimensions, specifications, prices and features are approximate and subject to change without notice. Not intended to solicit properties currently listed for sale or individuals currently under contract with a Brokerage.